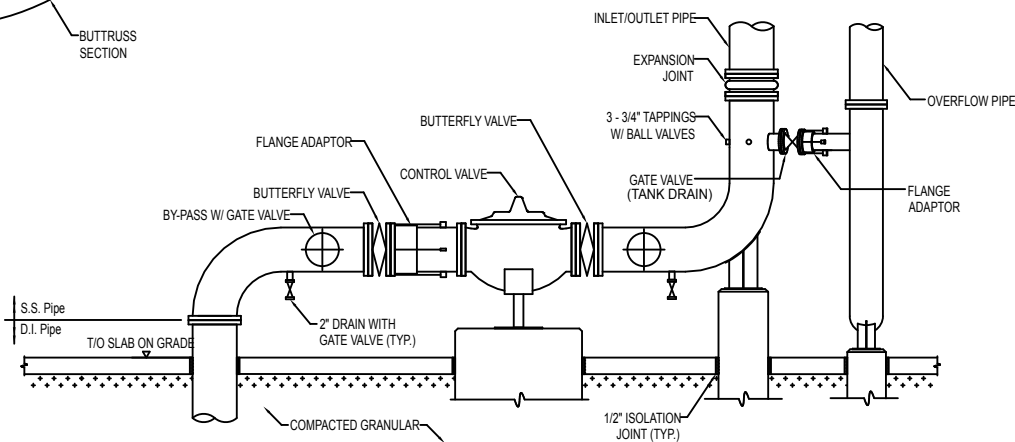


**PLAN**  
N.T.S.



**MECHANICAL PIPING**  
**SECTION VIEW**  
N.T.S.

**NOTES:**

**GENERAL:**

1. MAN DOOR - 3' WIDE X 7' HIGH, HOLLOW METAL DOOR WITH 16 GA. FRAME AND HEAVY DUTY CLOSURE.
2. VEHICLE DOOR - 10' WIDE X 10' HIGH ROLLING STEEL WITH 22 GA. GALVANIZED SLATS AND MANUAL CHAIN OPERATOR.
3. PROVIDE MONOLITHIC REINFORCED CONCRETE INTERNAL BUTTRESS SECTION ON EACH SIDE OF VEHICLE DOOR. BUTTRESS TO BE MINIMUM 3'-6" WIDE AND 6" THICKER THAN NOMINAL WALL DIMENSION.

**SLAB ON GRADE:**

1. PROVIDE A 6" THICK 4000 PSI CONCRETE FLOOR ON COMPACTED GRANULAR FILL REINFORCED WITH #4 BARS AT 12" CENTERS EACH WAY.
2. PROVIDE 1/2" ISOLATION JOINT BETWEEN FLOOR AND WALL AND AT ALL FLOOR PENETRATIONS. CAP WITH SELF LEVELING SEALANT.
3. SAWCUT CONTROL JOINTS 1 1/2" DEEP AT 20 FEET MAXIMUM CENTERS.
4. SLOPE SLAB MINIMUM 0.5% TO VEHICLE DOOR FOR DRAINAGE.

**MECHANICAL:**

1. PROVIDE EXPANSION JOINT ON INLET/OUTLET RISER TO ACCOMMODATE MAXIMUM POTENTIAL DIFFERENTIAL MOVEMENT.
2. CONNECT RISER AND OVERFLOW WITH A VALVED LATERAL FOR TANK DRAINING.
3. PROVIDE THRUST RESTRAINT AND SUPPORT AS REQUIRED.
4. INSTALL 3 PC. 3/4" TAPPINGS COMPLETE WITH BRONZE BALL VALVE AND PLUG ON INLET/OUTLET PIPE.
5. INLET/OUTLET PIPE TO BE INSULATED AND CLAD WITH ALUMINUM JACKET WHERE REQUIRED FOR FREEZE PROTECTION. SEE SPECIFICATION.

**ELECTRICAL:**

1. MOUNT EXTERIOR DOOR LIGHTS 10' ABOVE GRADE.
2. MOUNT INTERIOR PEDESTAL BASE LIGHTS 10' ABOVE SLAB ON GRADE.

VERSION 7 - 03/01/2006

REV.	DESCRIPTION	DRN.	DATE	CKD.	DATE
FOR:					
LOCATION:					
TITLE: <b>DETAILS</b>				JOB NO.:	
				DWG NO.:	
DRN:	DATE:	DESIGN BY:	SHEET: 2 of 2		
CKD:	DATE:	REF:	SCALE:		